



Welcome to Prairie View Apartments

1170 Hwy 14, Ellsworth, KS 67439

Formerly known as the Drovers Cottages, this apartment community is now available to adults of any age and their families. Apartments come with access to our beautiful common area for indoor walking and can be reserved for private meetings/gatherings. We provide exceptional maintenance and optional private garages.

There are garages available at \$95/mo. Covered access from main building and remote garage door opener.

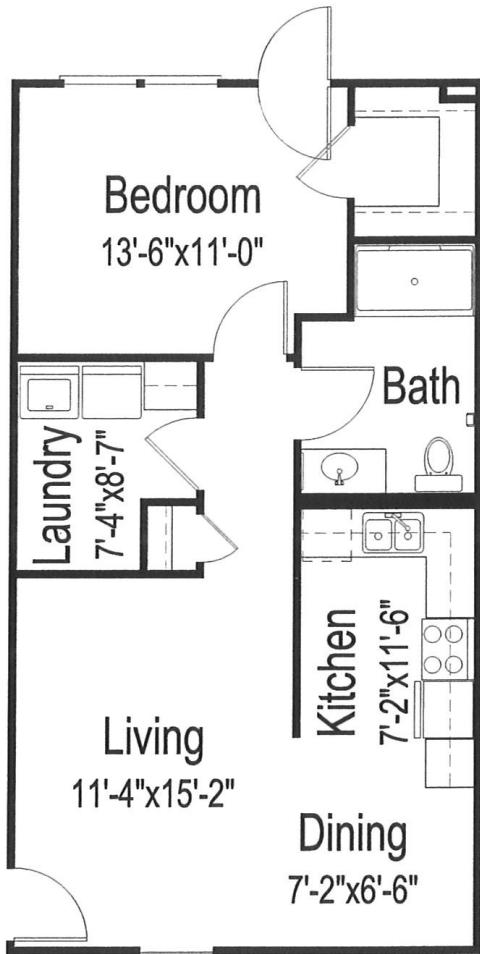
CONTACT Anita at Hoffhines Properties for availability , application and more information. Call or text 785-531-0160

Do the math! You will only have rent and electricity each month. Cable TV & Internet included in your rent!

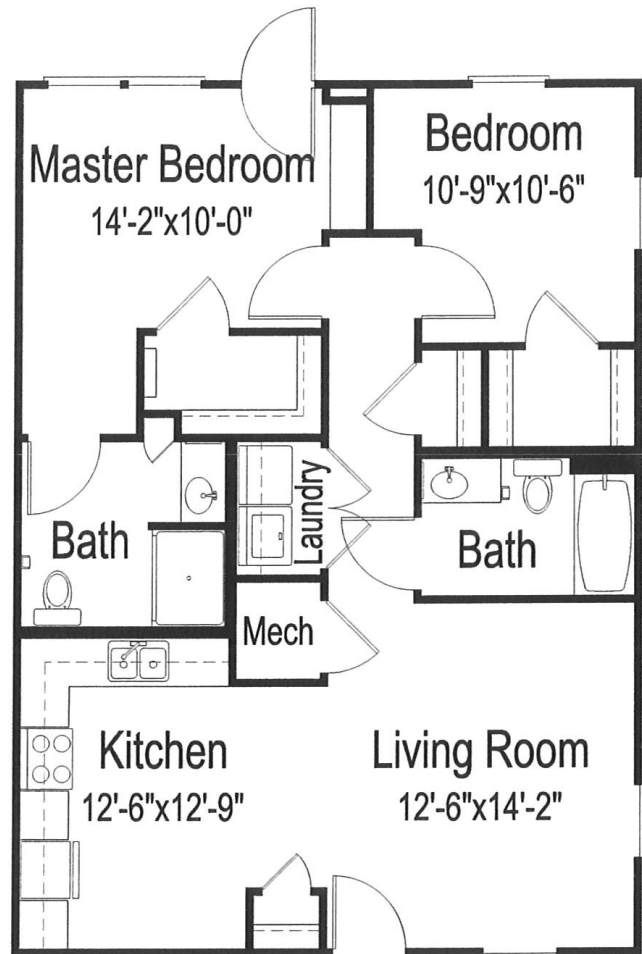
- ◆ One bedroom-one bath and two bedroom-two bath apartments are all electric and include refrigerator, range, dishwasher & disposal.
- ◆ Water-Sewer-Trash INCLUDED
- ◆ High-Speed Wireless Internet INCLUDED
- ◆ Extended Cable Television INCLUDED
- ◆ Lawncare INCLUDED
- ◆ Community Exercise Room INCLUDED
- ◆ Washer-Dryer Hookups in each apartment.
- ◆ Monthly Rent is \$775 for 1 Bedroom, 1 bath, 12 mo lease
- ◆ Monthly Rent is \$875 for 2 Bedroom, 2 Bath, 12 mo lease
- ◆ Each resident pays their own electricity bill to Western Cooperative Electric—estimated average per month is \$65 over 12 months
- ◆ Security Deposit = \$500.00
- ◆ Free Use of Common Area for Events
- ◆ Have a Pet? Ask for more information
- ◆ \$40 Application Fee

Welcome to Prairie View Apartments

1170 Hwy 14, Ellsworth, KS 67439



One bedroom, one bathroom
690 square feet
(dimensions and square footage may vary)



Two bedrooms, two bathrooms
920 square feet
(dimensions and square footage may vary)

For updated info & videos of both one and two bedrooms, go to
www.hoffhinesproperties.com